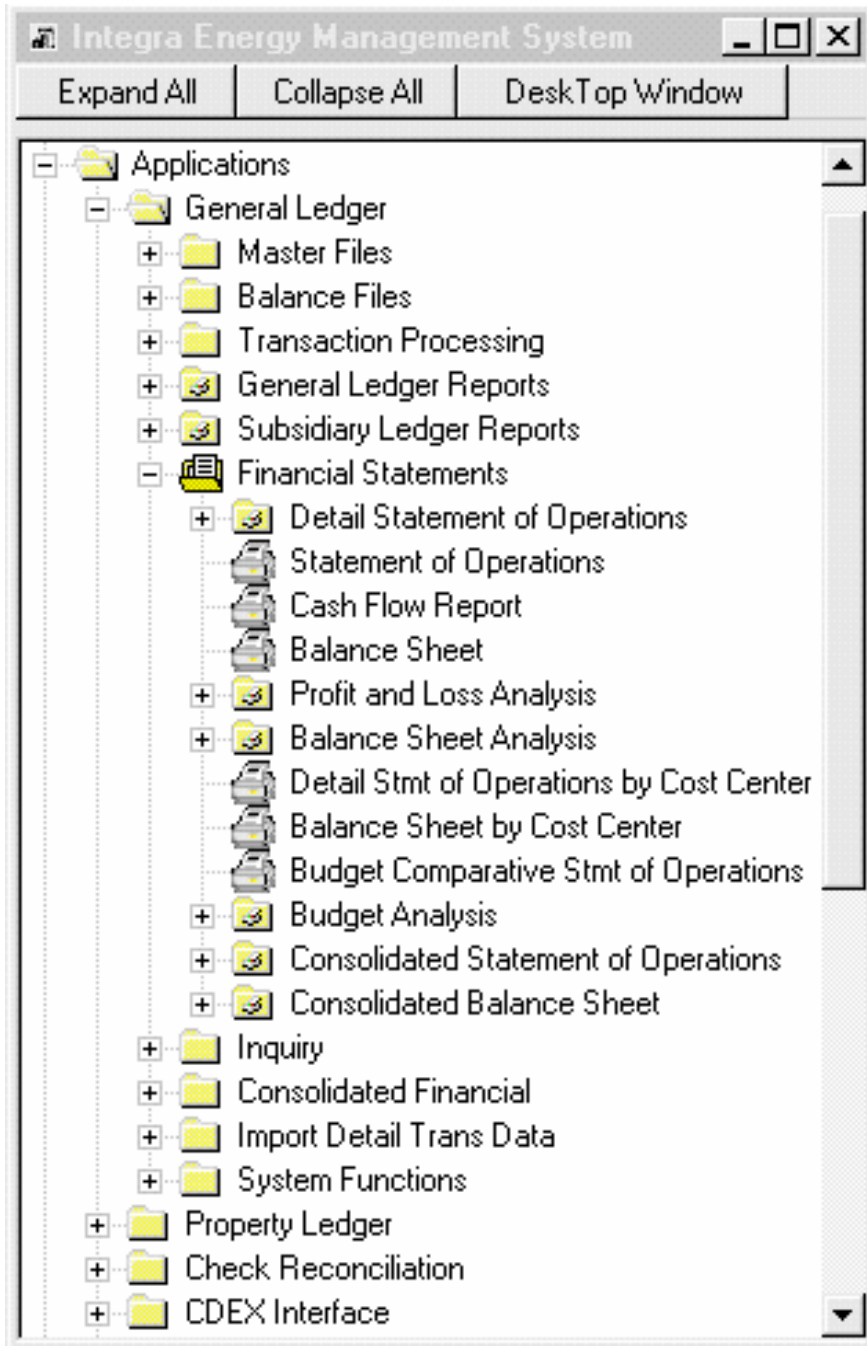


Integra Treeview Menu



The Integra Treeview Menu is an integrated application interface component that facilitates navigation, task management and information processing within the Integra environment.

The Treeview Menu allows any authorized user to utilize a standard tree-view interface to navigate the Integra application menus via an intuitive point and click interface. The Treeview Menu “remembers” what menu tasks you were using and facilitates navigation and executing repetitive tasks.

Overview

The Integra Treeview Menu reproduces the Integra standard windows menus in an interface similar to the Microsoft Windows™ Explorer.

Using the Treeview Menu’s intuitive point and click technology, management staff and daily system “power” users can easily locate menu task items. The Treeview’s menu choices can be easily expanded, collapsed, kept on desktop or minimized as needed.

With the Treeview’s integrated process control feature, you can easily monitor the status of any system processes such as Distribution, Allocation and Billing cycles with the intuitive task and process step check-off interface.

Contact our marketing or support team to see how easily Integra’s advanced easy to use menu interface features can be put to work for you and your organization.

Service and Support

Help Desk Support
Training & Implementation
Data Migration & Integration
Consulting

Contact Avatar

sales@questasoftware.com
432.684.1155

Features and Benefits

Management Navigation Tool
Easy for Casual Users
Efficient for Power Users
Point & Click Interface
No Training Required
Easy Intuitive Interface
Expandable or Collapsible
Monitors Processing Steps
Integrated Security Controls